

# Less=More

## DOUBLE FLIP BORDER INSTRUCTIONS

Here's how to combine our Less=More Double Flips into one long banner as pictured. PLEASE READ ALL INSTRUCTIONS BEFORE BEGINNING TO STITCH!

We stitched the entire series together on 32 ct. lambswool linen (Wichelt #65135). Choose whatever fabric and fabric count you prefer. The stitch count for the entire project, including the top and bottom border, is 91 wide x 348 high.

The threads we used are as follows. The numbers following each color are suggested numbers of skeins to complete the series. If you use a different fabric count, your quantity may vary.

Weeks Dye Works dirt road, guacamole, Madison rose (2), molasses (2), pecan, purple haze, romance, straw (2), tarragon.

Gentle Art Sampler Threads endive (2), old blue paint, dungarees.

When stitching the whole series together, begin by stitching the free Less=More top border provided here using GAST endive. Then you are ready to stitch the individual design, using the placement graph. Go down 2 fabric spaces below the lower horizontal line on top border (as shown on the graph) and stitch "Fear Less".

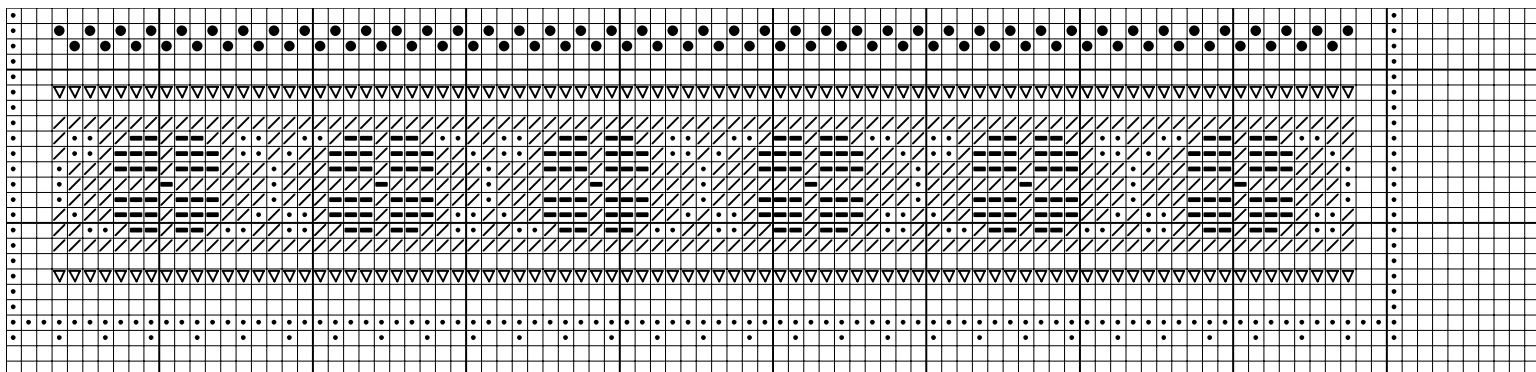
DO NOT stitch the border between "Fear Less" and "Hope More" as shown on the individual graph. Replace it with checked border we provide on the placement graph. Then go down 2 spaces below that border and begin stitching the "Hope More" graph. Next, ELIMINATE the entire decorative border at the bottom of the Double Flip.

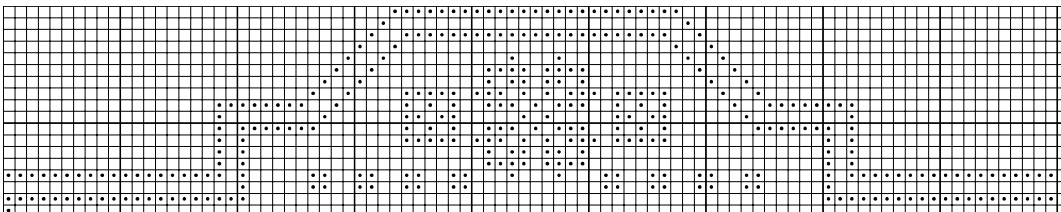
Continue in this manner to place all the Double Flips together. Just remember to 1) replace the middle border with the checked border provided and 2) eliminate the bottom border. There will always be 2 spaces between each design and each checked border. When you reach the bottom, stitch the bottom border provided, using colors indicated.

If your design isn't spaced exactly, like ours...no worry! Just keep stitching and add the bottom border when you get there! Refer to graph at right and color photo if you have questions! ENJOY!!!

Symbol	Gentle Art Weeks	DMC	Anchor
•	endive	3012	844
●	old blue paint	932	1033
—	purple haze	3740	872
/	straw	437	362
▽	tarragon	520	861

### Bottom Motif (enlarged)





*Fear Less*

*Hope More*

*Whine Less*

*Breathe More*

*Talk Less*

*Say More*

*Hate Less*

*Love More*

