



Strawberry

Symbol

Overdyed Threads



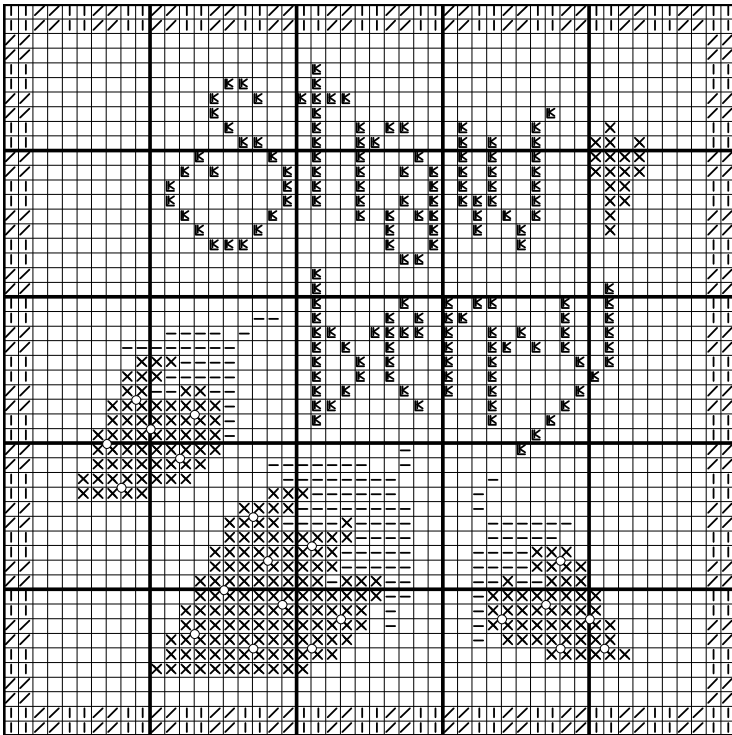
black crow
 claret
 dried thyme
 oatmeal
 strawberry fields - Weeks Dye Works

} Gentle Arts
 Sampler Threads

Stitch Count: 50 W x 50 H

Fabric: Your choice

Cross stitch over 2 threads with 2 ply overdyed threads. Attach seed beads (Mill Hill #00479) where shown by hollow dots on graph.



Lizzie★Kate

Lizzie*Kate, Inc.®